

QUICK START GUIDE

Server Stainless Steel Pump

Tips and tricks to help you get started with your new Stainless Steel Pump.

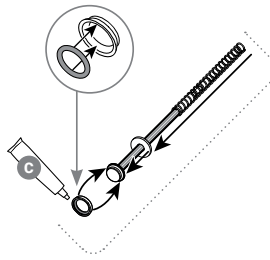
1

Remove pump from box. Disassemble and wash, rinse, sanitize, and air dry all parts before use.



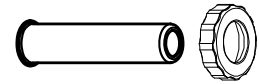
2

Install O-ring into seal. Install seal onto piston head. Apply food equipment lubricant on outside of seal. Slide washer into position. Slide spring into position.



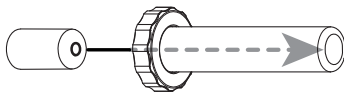
3

Slide locking collar (thread side down) towards flared end of head tube.



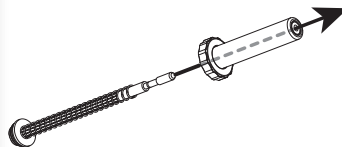
4

Slide head insert (beveled edge first) into head tube. The end with smaller hole should go first.



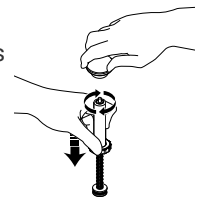
5

Insert piston assembly into head tube assembly.



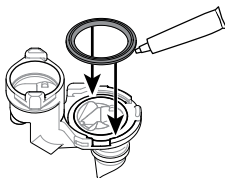
6

Install knob. Press head tube down to compress spring and expose piston threads.



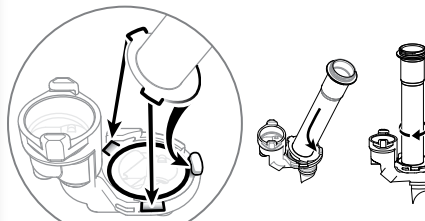
7

Install large O-ring into valve body. Apply food equipment lubricant on O-ring.



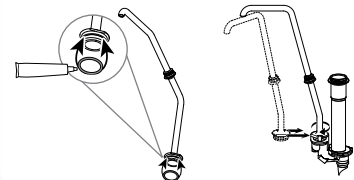
8

Install cylinder onto valve body.



9

Install medium O-ring onto discharge tube. Apply food equipment lubricant on O-ring. Install discharge tube onto valve body.



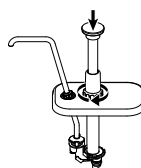
10

Install lid by sliding smaller lid hole over discharge tube. Align center hole with threads on cylinder. Secure lid with discharge tube nut.



11

Install plunger assembly into cylinder. Secure with locking collar.



12

Attach pump by placing pouch on counter fitment circle facing up. Position connector directly over fitment and press pump connector down to pierce through the film in pouch fitment. It's fully engaged when top surface of fitment touches pump connector rim.

